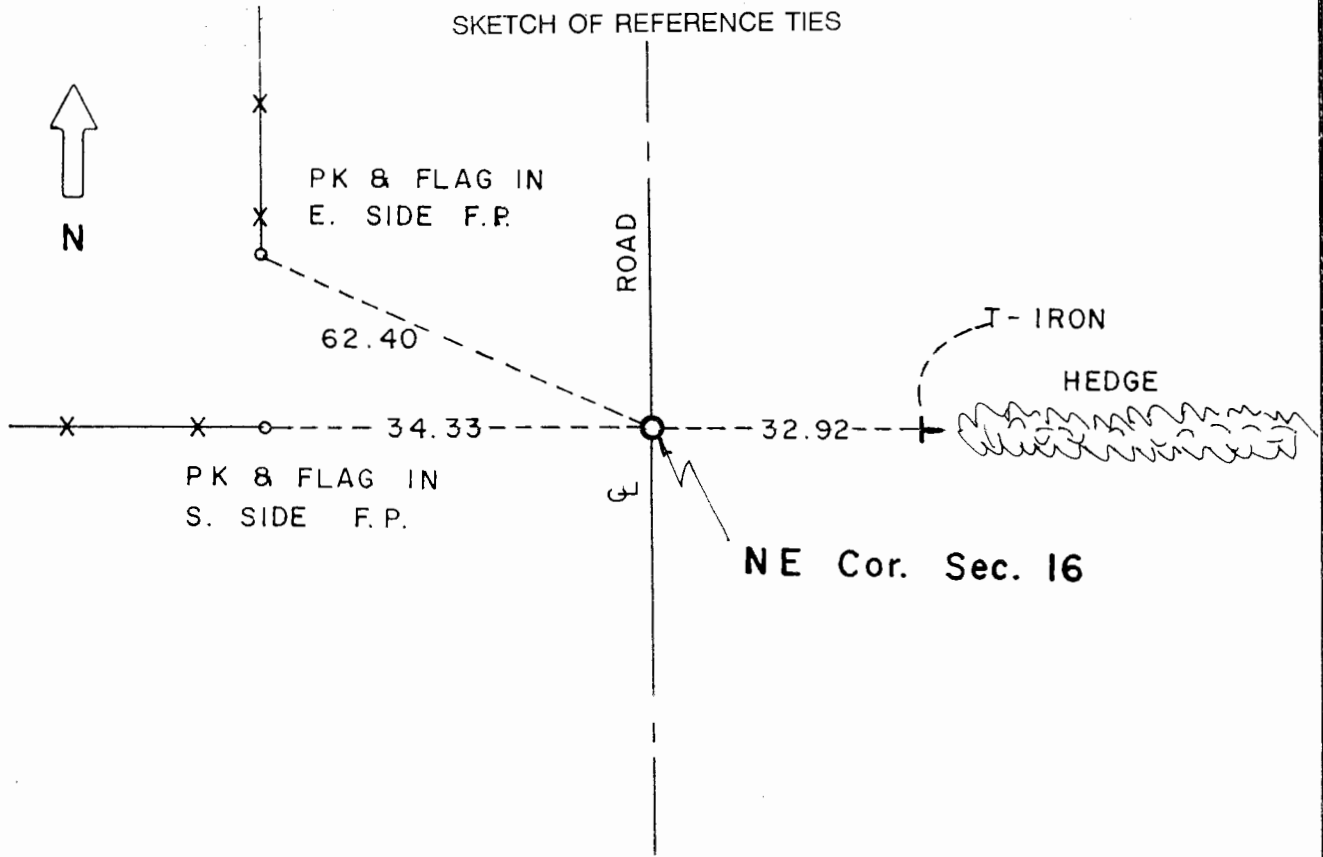


# CERTIFICATE OF LOCATION OF GOVERNMENT CORNER

**Northeast** Corner of Section **16** , Township **107** , Range **41** 5th P.M.

STATE OF MINNESOTA, County of Murray.

**Statement:** May 31, 1989 - Found Capped Iron Pin by Timothy Bell, LS 16093, along with 2 rerods and a concrete monument with wire. Lowered the monuments and placed a Minnesota Dept. of Transportation Cast Iron Monument at the road surface.



Statement of evidence relative to this corner location is on the back of page.

I hereby certify that this document and the data contained herein was prepared by me or under my direct supervision and that I am a duly Registered Land Surveyor under the laws of the State of Minnesota.

*Duane A. Bonnema*  
 Duane A. Bonnema

2-23-91  
 Date

Minnesota Registration No. 14895

OFFICE OF THE COUNTY RECORDER  
 COUNTY OF MURRAY **MAR 1 1 1991**

I hereby certify that this document was filed in the County Recorder's office at \_\_\_ M. on the \_\_\_ day of \_\_\_\_\_ A.D., 19\_\_

County Recorder *James V. Johnson*

By \_\_\_\_\_, Deputy  
 DOCUMENT NO. \_\_\_\_\_

Northeast Cor. Sec. 16 T107N-R41W

Statement:

August 1861

Original Government Land Office Surveyor L. G. M. Fletcher records in his field notes, "built mound with trench pits, charred stake, per instructions."

July 6, 1901

J. W. Woolstencroft, County Surveyor, records in the County Surveyor's Record Book, page 138, "Cement corner with wire." He also shows that he measured to the Corner while he was doing survey work in Section 10.

May 31, 1989

Duane A. Bonnema, LS Reg. No. 14895, found a 1/2 inch x 18 inch capped re-rod marked "Bell RLS 16093." A 1/2 inch x 12 inch iron rod was found 1 1/2 feet below the road surface. A deteriorated 8 inch diameter concrete monument with wire in it and a 1/2 inch re-rod driven through it was also found. Original topsoil encountered at a depth of 2 feet. The bottom of the deteriorated concrete monument was at a depth of 4 feet in the clay below the topsoil. A Minnesota Department of Transportation Cast Iron Monument was placed at the road surface.